

TRUSTED SINCE 1926

BONIDE[®]

All Seasons^{®1}

Horticultural & Dormant Spray Oil

Concentrate 

Use year-round¹

Controls insects and diseases as listed on this label

**Dormant & growing season
insect spray**

ACTIVE INGREDIENT:

Mineral Oil¹ 98%

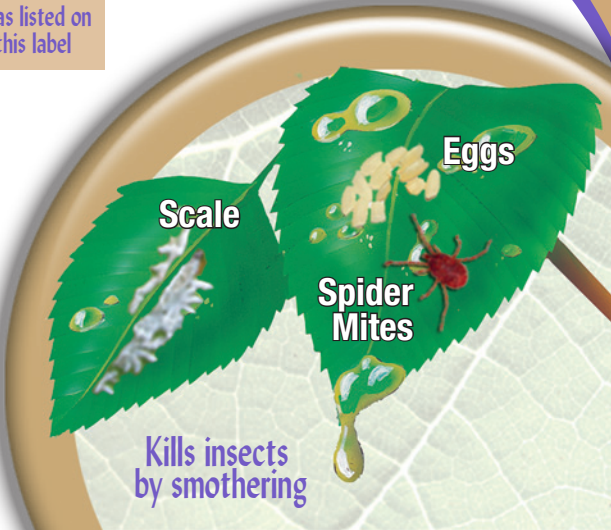
OTHER INGREDIENTS: 2%

TOTAL: 100%

(Superior type U.R. Min 92%) *Contains Petroleum Distillate

EPA Est. No. 4-NY-1 EPA Reg. No. 4-80

¹ Do not apply when temperature is greater than 90° F or less than 40° F.



Kills insects
by smothering

Keep Out Of Reach Of Children

CAUTION (See Back Panel for Additional Precautionary Statements and First Aid)



**FOR ORGANIC
GARDENING**

All **Seasons**[®] Horticultural Spray Oil & DORMANT Concentrate

- ✓ 3-in-1 product provides protection against insects, mites & diseases listed on this label
- ✓ CONTROLS scale insects, mealybugs, apple aphids, European red spider mites, leafminers, leaf rollers, (redbanded, obliquebanded, fruittree), light brown apple moth, powdery mildew, rust and other insects and diseases listed on this label. USE on pears, cherries, peaches, asparagus, corn, peppers, roses, and other crops as directed on this label
- ✓ Controls insects and diseases as listed on this label

¹Do not apply when temperature is greater than 90°F or less than 40°F

Store and transport in an upright position.

EPA Est. No. 4-NY-1 EPA Reg. No. 4-80

©Bonide Products, LLC

All Rights Reserved

Distributed By:

Bonide Products, LLC

6301 Sutliff Road

Oriskany, NY 13424



FOR ORGANIC
GARDENING

BN

DIRECTIONS FOR USE

It is a violation of Federal law to use this product in a manner inconsistent with its labeling.

Do not apply this product in any way that it will contact other persons or pets, either directly or through drift. Keep other persons out of the treated area during application. Do not allow persons or pets to enter the treated area until sprays have dried.

NOTE: DO NOT APPLY ALL SEASONS® HORTICULTURAL AND DORMANT SPRAY OIL WITH SULFUR SPRAYS OR WHERE SULFUR IS ON THE FOLIAGE. TO DO SO MAY CAUSE FOLIAGE INJURY, LEAF DROP. DO NOT APPLY ALL SEASONS® HORTICULTURAL AND DORMANT SPRAY OIL AT ABNORMAL TEMPERATURES (ABOVE 90° F) OR WHEN PLANTS ARE DRY (SUFFERING FOR WANT OF MOISTURE) AS IT MAY CAUSE LEAF DROP DUE TO "SHOCK."

Mixture ratios vary. Read and use according to application directions. Apply using a good pressure spray hose-end or watering can.

This product is a self-emulsifying spray oil, composed of paraffinic oil with emulsifier and spreader sticker, which envelop, wet and smother over wintering eggs of European red spider mites, Adelgids, scale insects, apple aphids, bud moths, leaf roller (redbanded, obliquebanded, fruittree), light brown apple moth, red bug, codling moth larvae, psylla (adults), blister mites, galls, whitefly larvae and mealybugs on fruit trees, shade trees, vegetables, ornamentals, shrubs and roses.

ALL SEASONS® HORTICULTURAL AND DORMANT SPRAY OIL may be used at the DORMANT STAGE (before buds show green tissue), GREEN TIP STAGE (when leaves of blossom buds are bursting and show about $\frac{1}{8}$ to $\frac{1}{4}$ inch of green color), DELAYED DORMANT STAGE (when the leaves of the blossom buds are out from $\frac{1}{4}$ to $\frac{1}{2}$ inch), and during the GROWING SEASON.

SHAKE WELL. Then add HORTICULTURAL SPRAY OIL to desired amount of water and mix thoroughly. Use a good pressure spray and apply enough liquid per tree to wet entire surface of branches, main limbs and trunk. Give special attention to underside of limbs. Make application when the temperature is above 40°F.

2 Tablespoons=1 fluid ounce

FRUIT, NUTS & BERRIES

CROP	PESTS	TIMING & DILUTION RATE	RESTRICTIONS
Acerola (Barbados Cherry)* Atemoya* Carambola (Star Fruit)* Rambutan*	Aphids, Mites, Beetle Larvae, Leafminers, Thrips, Leafhopper, Whitefly, Caterpillars, Alternaria Leafspot, Gummy Stem Blight, Powdery Mildew, Rust	Use 2 – 4 tbsp. of oil per 1 gal. of water. Spray once or twice weekly depending on the rapid growth of the crop and/or vector pressure	*Asterisk denotes crop, pest not approved in California.
	Cucumber Mosaic Virus, Papaya Ringspot Virus, Pepper Mottle Virus, Potato Leafroll Virus, Potato Virus Y, Tobacco Etch Virus, Watermelon Mosaic Virus 2, Zucchini Yellow Mosaic Virus	Use 2 tbsp. of oil per 1 gal. of water. Spray as needed.	
Almonds Apricots Cherries Nectarines Peaches Pistachio	Black Scale, European Fruit Lecanium Scale, Frosted Scale, Olive Scale, San Jose Scale, Brown Mite Eggs, European Red Mite Eggs, Aphid Eggs, Fruit Tree Leafroller* (Eggs), Wintering Phytocoris* (only on pistachio), Tent Caterpillars*	DORMANT AND DELAYED DORMANT: Use 2.5 – 7.5 tbsp. of oil per 1 gal. of water. European Fruit Lecanium Scale and European Red Mite Eggs: Apply from Green Tip to Delayed Dormant. San Jose Scale: Apply from Dormant, Green Tip to Delayed Dormant. Re-spray as needed. For use on pistachio, apply as a dormant treatment and/or trees may be sprayed after harvest.	*Asterisk denotes crop, pest not approved in California.

CROP	PESTS	TIMING & DILUTION RATE	RESTRICTIONS
	Terrapin Scale	DELAYED DORMANT: Use 5 – 7.5 tbsp. of oil per 1 gal. of water.	
	Cottony Peach Scale	DORMANT: Use 5 – 7.5 tbsp. of oil per 1 gal. of water.	
	Powdery Mildew* (Cherries, Nectarines and Peaches only)	<p>Cherries: Use 2.5 – 5 tbsp. of oil per 1 gal. of water.</p> <p>Preharvest Use: Use up to pit hardening stage. Apply at 10-14 day intervals – shorten interval and/or use 5 tbsp. of oil per gal. of water when disease conditions are severe. Trees may be sprayed after harvest to maintain control and reduce overwintering inoculum.</p> <p>Nectarines/Peaches: Use 2.5 – 5 tbsp. of oil per 1 gal. of water.</p> <p>Begin at 5% bloom and continue at 10-14 day intervals until terminal growth phase stops. Do not apply to oil sensitive varieties.</p>	*Asterisk denotes crop, pest not approved in California.
	Scales, Two-spotted Spider Mite, Pacific Mite, European Red Mite, Brown Mite	FOLIAR SPRAY: Use 1.5 – 4 tbsp. of oil per 1 gal. of water. Spray as needed.	

CROP	PESTS	TIMING & DILUTION RATE	RESTRICTIONS
	White Peach Scale on Peaches: Only for use in Georgia, Florida, South Carolina, North Carolina, and Alabama	<p>DORMANT: Use 4 – 5 tbsp. of oil per 1 gal. of water. Apply before buds begin to swell in the spring.</p> <p>Make 2 applications 7-14 days apart, or according to local Cooperative Extension Service recommendations, during the dormant period.</p>	
Apples	European Fruit Lecanium Scale, Olive Scale, San Jose Scale, European Red Mite Eggs, Rust Mite, Rosy Apple Aphid Eggs, Apple Aphid Eggs	<p>DORMANT OR DELAYED DORMANT: Use 2.5 – 5 tbsp. of oil per 1 gal. of water.</p> <p>Rust Mite: Apply 4 – 5 tbsp. of oil per 1 gal. of water during the delayed dormant timing.</p>	
	Codling Moth*		<p>Restriction: Use to control first generation early instar stages only.</p> <p>*Asterisk denotes crop, pest not approved in California.</p>

CROP	PESTS	TIMING & DILUTION RATE	RESTRICTIONS
	Leafroller (red banded, oblique banded, fruit tree), Apple Red Bug, Scurfy Scale, European Red Mite, Bud Moth, Light Brown Apple Moth, Red Bug	GREEN TIP TO DELAYED DORMANT: Use 2.5 – 7.5 tbsp. of oil per 1 gal. of water. Re-spray as needed.	
	San Jose Scale, Forbes Scale	DORMANT, GREEN TIP TO DELAYED DORMANT: Use 2.5 – 5 tbsp. of oil per 1 gal. of water. Spray as needed.	
	Powdery Mildew	Use 2.5 – 5 tbsp. of oil per 1 gal. of water. Apply at tight cluster and continue every 10-14 days through second cover spray. Use 5 tbsp./gal. and/or shorter spray interval when disease conditions are severe.	
	Scales, Mites including: Two-spotted Spider Mite, Pacific Red Mite, European Red Mite, Rust Mite, Leafhopper*, San Jose Scale, Rosy Apple Aphid*, Fruit Tree Leafroller*	FOLIAR SPRAY (Post Bloom): Use 1 – 4 tbsp. of oil per 1 gal. of water. For rust mite, summer use, use 2.5 – 4 tbsp. of oil per 1 gal. of water. Apply every 10-14 days depending on level of pest pressure. Trees may be sprayed after harvest to maintain control and reduce over-wintering pressure. Do not apply oil to sensitive varieties.	*Asterisk denotes crop, pest not approved in California.

CROP	PESTS	TIMING & DILUTION RATE	RESTRICTIONS
Avocados	Avocado Brown Mite, Thrips, Persea Mite	Use 1.5 – 2.5 tbsp. of oil per 1 gal. of water. Apply through late fall. Re-apply as needed.	California: Consult with your local University of California Cooperative Extension Service for proper timing and application parameters.
Bananas Plantains	Black Leaf Streak (<i>Mycosphaerella fijiensis</i>), Black Sigatoka (<i>Mycosphaerella fijiensis</i> var. <i>difformis</i>), Yellow Sigatoka (<i>Mycosphaerella musicola</i>)	Use 1.5 – 4 tbsp. of oil per 1 gal. of water. Begin application when disease first appears and continue every 10-15 days during rainy periods or as is needed.	Restriction: Do not apply when daytime temperatures exceed 80° F as injury may occur. Phytotoxicity may be affected by the quantity of oil used, vigor of trees and temperature at the time of application. Bag fruits, or use a directed spray on unbagged fruits. Bagged fruit improves crop safety whereas unbagged fruit may show phytotoxicity. This application is also effective in loosening Sooty Mold Fungus and in preventing its formulation by the control of Aphids, Mealybugs, Scales and Whitefly.
Blueberries Bushberries Caneberries Raspberries	Mites, Powdery Mildew, Rust, Sawfly (eggs)*, Scales*, Aphids, Mealybug	Use 2 – 4 tbsp. of oil per 1 gal. of water. Spray as needed.	Spray for optimum coverage of leaf surfaces. *Asterisk denotes crop, pest not approved in California.

CROP	PESTS	TIMING & DILUTION RATE	RESTRICTIONS
Figs	Fig Scale	DORMANT OR DELAYED DORMANT: Use 2.5 – 7.5 tbsp. of oil per 1 gal. of water. Spray as needed.	
	Mites, Mealybug, Scale	Use 2.5 – 5 tbsp. of oil per 1 gal. of water.	Apply as foliar spray.
Grapes	Mealybug, Mites, Leafhopper*, Whiteflies*, Powdery Mildew, Botrytis	Use 2.5 – 7.5 tbsp. of oil per 1 gal. of water. Spray for optimum coverage of leaf surfaces. Repeat sprays every 10-14 days.	Oil will remove the bloom on grapes.
		For Powdery Mildew – Use 2.5 – 7.5 tbsp. of oil per 1 gal. of water. Make first application pre-bloom and continue every ten days to three weeks depending on level of disease pressure. Use 7.5 tbsp./gal. and/or shorter spray interval when disease conditions are severe.	Restriction: Table grapes must not be sprayed within 60 days of harvest. Restriction: On grapes, do not mix oil and copper more than once/season.
		For Botrytis Bunch Rot – Use 2.5 – 5 tbsp. of oil per 1 gal. of water. Initiate sprays at bloom and repeat prior to bunch closing and véraison. Final application at harvest if needed. Use 5 tbsp./gal. when disease conditions are severe.	Restriction: Do not use copper and oil together with fruit present. *Asterisk denotes crop, pest not approved in California.

CROP	PESTS	TIMING & DILUTION RATE	RESTRICTIONS
Kiwi	Latania Scale, Greedy Scale, Oleander Scale, San Jose Scale	Use 10 – 15 tbsp. of oil per 1 gal. of water. Use 15 tbsp./gal. when scale populations are high. Spray as needed. Do not apply after budbreak.	Restriction: Do not use on weak or stressed vines, or where soil moisture is inadequate.
Mango	Mites, Powdery Mildew	Use 2.5 – 4 tbsp. of oil per 1 gal. of water. Apply every 2-3 weeks as necessary depending on level of pest pressure. For Powdery Mildew – Begin application before bloom. Repeat at bloom and every 2-3 weeks as necessary.	
Olives	Olive (Parlatoria) Scale, Oleander Scale, Black Scale	POSTBLOOM THROUGH AUGUST AND AFTER HARVEST: Use 2.5 – 4 tbsp. of oil per 1 gal. of water. Spray as needed.	
	Mites	PREBLOOM TO POSTBLOOM BUCKSHOT: Use 4 tbsp. of oil per 1 gal. of water. Spray as needed.	
Papaya	Mites, Powdery Mildew, Papaya Ringspot Virus	Use 2 – 4 tbsp. of oil per 1 gal. of water. For Powdery Mildew and Mites: Spray every 10-14 days depending on the level of pest pressure. For Virus: Spray weekly. Initiate spray when seeds are germinated.	

CROP	PESTS	TIMING & DILUTION RATE	RESTRICTIONS
Pears	European Fruit Lecanium Scale, Olive Scale, San Jose Scale, European Red Mite Eggs	DORMANT: Use 2.5 – 5 tbsp. per 1 gal. of water. Spray as needed.	
	Pear Psylla	Apply before eggs are laid in early spring.	
	Codling Moth*	Use to control first generation early instar stages only.	*Asterisk denotes crop, pest not approved in California.
	Fruit Tree Leafroller, Pear Leaf Blister Mite	DORMANT: Use 2.5 – 7.5 tbsp. of oil per 1 gal. of water.	
	Powdery Mildew	Use 2.5 – 5 tbsp. of oil per 1 gal. of water. Apply at bud burst and continue every 10-14 days. Use 5 tbsp./gal. and/or 10-day spray interval when disease conditions are severe.	
	Scales, Two-spotted Spider Mite, Pacific Red Mite, European Red Mite, San Jose Scale and Italian Pear Scale (Summer forms), Leafhopper*, Pear Psylla	FOLIAR SPRAY (Post Bloom): Use 1 – 4 tbsp. of oil per 1 gal. of water. Trees may be sprayed after harvest to maintain control and reduce overwintering inoculum. Do not apply oil to sensitive varieties.	*Asterisk denotes crop, pest not approved in California.

CROP	PESTS	TIMING & DILUTION RATE	RESTRICTIONS
Pecans	Scales, Aphids (eggs), Mites (eggs)	<p>Use 5 – 7.5 tbsp. of oil per 1 gal. of water. Use 5 tbsp. of oil in 1 gal. of water when trees are in a weakened condition.</p> <p>Apply from late February until buds first break. Re-spray as needed.</p>	
Pineapple	Mealybugs, Bud Moth, Chinese Rose Beetle	<p>Spray: Use 2.5 – 5 tbsp. of oil per 1 gal. of water. Spray as needed.</p> <p>Dip: Use 2.5 – 5 tbsp. of oil per 1 gal. of water. Dip for 30 seconds.</p>	Allow fruit to dry for 1 hour before being stored.
Plums Prunes	Black Scale, European Fruit Lecanium Scale, Frosted Scale, Olive Scale, San Jose Scale, Brown Mite Eggs, European Red Mite Eggs, Aphids Eggs, Fruit Tree Leafroller Eggs, Tent Caterpillars*	<p>DORMANT AND DELAYED DORMANT: Use 2.5 – 7.5 tbsp. of oil per 1 gal. of water.</p> <p>Preferred times of application for European Fruit Lecanium Scale and European Red Mite Eggs are Green Tip to Delayed Dormant and for San Jose Scale are Dormant, Green Tip to Delayed Dormant.</p> <p>Spray as needed.</p>	*Asterisk denotes crop, pest not approved in California.
	Terrapin Scale	DELAYED DORMANT: Use 5 – 7.5 tbsp. per 1 gal. of water. Spray as needed.	
	Cottony Peach Scale	DORMANT: Use 5 – 7.5 tbsp. per 1 gal. of water. Spray as needed.	

CROP	PESTS	TIMING & DILUTION RATE	RESTRICTIONS
	Two-spotted Spider Mite, Pacific Mite, European Red Mite, Brown Mite	<p>FOLIAR SPRAY: Use 1.5 – 4 tbsp. of oil per 1 gal. of water. Spray as needed.</p> <p>Trees may be sprayed after harvest to maintain control and reduce over-wintering pressure. Do not apply oil to sensitive varieties.</p>	Restriction: Certain varieties of plums and prunes may be injured by oil sprays; check for tolerance prior to treatment. Do not apply to trees lacking moisture.
Strawberries	Aphids*, Botrytis, Leafminers*, Mites, Powdery Mildew, Sawfly, Scale, Whiteflies	2 tbsp. of oil per 1 gal. of water. Spray as needed.	*Asterisk denotes crop, pest not approved in California.
Walnuts	Black Scale, Calico Scale, European Fruit Lecanium Scale, Frosted Scale, Olive Scale, San Jose Scale, European Red Mite Eggs, Walnut Aphid Eggs	<p>DELAYED DORMANT: Use 10 – 15 tbsp. of oil per 1 gal. of water.</p> <p>Spray as needed.</p>	Restrictions: Do not apply after husk split. Do not spray oil on sensitive varieties.
	Spider Mites, Soft Scales	SUMMER FOLIAR: Use 10 – 15 tbsp. of oil per 1 gal. of water. Spray as needed.	

CITRUS (California Only)

Do not exceed a maximum of 4.8 pounds active ingredient per 1,000 square feet in California.

CROP	PESTS	TIMING & DILUTION RATE	RESTRICTIONS
Grapefruit Lemons Limes Oranges (Navel & Valencia) Tangelos Tangerines Other citrus hybrids	Mites: Citrus Bud, Citrus Flat, Citrus Red, Citrus Rust Scales: Black, Brown Soft, California Red, Citricola, Purple, Yellow, Red	<p>Central California: Use 1.5 – 4 tbsps. of oil per 1 gal. of water. Lemons and Limes: make applications in all months except December through February. Grapefruit: make applications July through October. Navel Oranges: make applications July through September. Valencia Oranges, Tangelos, Tangerines and other citrus hybrids: make applications July through October. Spray as needed.</p>	<p>Restriction: Do not apply prior to or during a period of excessively high temperatures. Do not apply oil spray when trees show stress.</p>
	Mites: Citrus Bud, Citrus Flat, Citrus Red, Citrus Rust Scales: Black, Brown Soft, California Red, Citricola, Purple, Yellow, Red	<p>Southern California: Use 1.5 – 4 tbsps. of oil per 1 gal. of water. Coastal Lemons and Limes: apply May and June and/or September through December. Interior Lemons and Limes: apply in April and May and/or September through November. Grapefruit: make applications July through October.</p>	<p>Consult with your local University of California Cooperative Extension Specialist for proper timing and spray program.</p>

CROP	PESTS	TIMING & DILUTION RATE	RESTRICTIONS
		<p>Navel Oranges: make applications July through September.</p> <p>Valencia Oranges, Tangelos, Tangerines and other citrus hybrids: make applications July through October.</p> <p>Spray as needed.</p>	
	<p>Mites: Citrus Bud, Citrus Flat, Citrus Red, Citrus Rust</p> <p>Scales: Black, Brown Soft, California Red, Citricola, Purple, Yellow, Red</p>	<p>Oxnard Plains Area: Use 1.5 – 4 tbsp. of oil per 1 gal. of water.</p> <p>Make applications as needed throughout the year.</p>	

CITRUS (Florida and Texas)

Do not exceed a maximum of 3.6 pounds active ingredient per 1,000 square feet in Texas and Florida.

CROP	PESTS	TIMING & DILUTION RATE	RESTRICTIONS
Citrons, Grapefruits, Lemons, Limes, Mandarins, Oranges, Tangelos, Tangerines Other citrus hybrids DO NOT APPLY TO NAVEL ORANGES.	Citrus Rust Mite, Spider Mites, Bud Mites, Flat Mites.	Use 1.5 – 4 tbsp. of oil per 1 gal. of water.	Precautions in the use of oil include: Do not apply oil spray when trees are wilting. Do not apply oil and sulfur within 3 weeks of each other. Sensitive foliage may be injured. In Florida, consult the Florida Citrus Spray and Dust Schedule, or your Agricultural Experiment Station or State Extension Service Specialist for complete details on the spraying program best suited to your locale. In Texas, consult with your Agricultural Experiment Station or State Extension Specialist for complete details on the spraying program suited to your locale.
	Scales: Black Soft, Brown Soft, Chaff, Glover, Purple, Red, Yellow	Summer spray only. Re-spray as needed.	
	Does not control Citrus Snow Scale.		
	Whitefly, Blackfly		
	Greasy Spot (Grapefruit)		
Greasy Spot (all other varieties)			
Loosening sooty mold		Use 4 tbsp./gal. when disease pressure is heavy.	

VEGETABLE GARDENS

CROP	PESTS	TIMING & DILUTION RATE	RESTRICTIONS
Asparagus, Beans, Beets, Broccoli, Chinese Broccoli, Broccoli Raab, Brussels Sprouts, Cabbage, Cauliflower, Chinese Cabbage (Bok Choy and Napa), Chinese Mustard Cabbage (Gai Choy), Cavalo Broccoli, Collards, Kale, Kohlrabi, Mizuna, Mustard Greens, Mustard Spinach, Rape Greens, Celery, Chayote, Chinese Waxgourd, Citron Melon, Cucumber, Gherkin, Hyotan, Cucuzza, Hechima, Chinese Okra, Balsam Apple, Balsam Pear, Bitter Melon, Chinese Cucumber, True Cantaloupe, Cantaloupe, Casaba, Crenshaw Melon, Golden Pershaw Melon, Honeydew Melon, Honey Galls, Mango Melon, Persian Melon, Pumpkin, Summer Squash, Winter Squash, Watermelon, Dasheen (Taro)*, Eggplant, Ginger*, Ginseng*, Herbs and Spices* (Curly Leaf Basil, Lemon Balm), Japanese Radish (Daikon)*, Lettuce, Okra*, Peppers, Potatoes, Radishes, Sweet Potatoes	Aphids, Mites, Beetle Larvae, Leafminers, Thrips, Leafhopper, Whitefly, Alternaria Leafspot, Gummy Stem Blight, Powdery Mildew, Rust	Use 2 – 4 tbsp. of oil per 1 gal. of water. Spray once or twice weekly depending on the rapid growth of the crop and/or vector pressure.	*Asterisk denotes crop, pest not approved in California.
(This cell is merged with the one above)	Cucumber Mosaic Virus, Papaya Ringspot Virus, Pepper Mottle Virus, Potato Leafroll Virus, Potato Virus Y, Tobacco Etch Virus, Watermelon Mosaic Virus 2, Zucchini Yellow Mosaic Virus.	Use 2 tbsp. of oil per 1 gal. of water. Spray as needed.	(This cell is merged with the one above)

CROP	PESTS	TIMING & DILUTION RATE	RESTRICTIONS
Chinese Artichoke* (Japanese Artichoke), Cilantro*, Herbs and Spices* (Mexican Oregano, Mint)	Aphids, Mites, Beetle Larvae, Leafminers, Thrips, Leafhopper, Whitefly, Alternaria Leafspot, Gummy Stem Blight, Powdery Mildew, Rust, Pepper Psyllids, Cucumber Mosaic Virus 2, Papaya Ringspot Virus, Pepper Mottle Virus, Potato Leafroll Virus, Potato Virus Y, Tobacco Etch Virus, Watermelon Mosaic Virus 2, Zucchini Yellow Mosaic Virus	Use 2.5 – 5 tbsp. of oil per 1 gal. of water. Spray once or twice weekly depending on the rapid growth of the crop and/or vector pressure.	*Asterisk denotes crop, pest not approved in California.
Corn (Sweet)	Aphids, Mites, Leafhopper*, Leafminers, Corn Earworm, Rootworm, Armyworm, Whitefly, Cercospora*	Use 2.5 – 5 tbsp. per 1 gal. of water. Spray as needed.	*Asterisk denotes crop, pest not approved in California.
Tomatoes	Aphids, Mites, Beetle Larvae, Leafminers, Thrips, Leafhopper, Whitefly, Alternaria Leafspot, Gummy Stem Blight, Powdery Mildew, Rust, Tomato Psyllid*, Tomato Pin Worm*, Fruit Worm*, Army Worm*, Horn Worm*, Lygus Bug*, Stink Bug*, Cucumber Mosaic Virus, Papaya Ringspot Virus, Pepper Mottle Virus, Potato Leafroll Virus, Potato Virus Y, Tobacco Etch Virus, Watermelon Mosaic Virus 2, Zucchini Yellow Mosaic Virus	Use 2 – 4 tbsp. of oil per 1 gal. of water. Spray once or twice weekly depending on the rapid growth of the crop and/or vector pressure.	*Asterisk denotes crop, pest not approved in California.

ROSES, FLOWERING SHRUBS & ORNAMENTALS

PLANT	PESTS	TIMING & DILUTION RATE	RESTRICTIONS
Flowering and Foliage Plants including Roses and Other Flowering Shrubs	Aphids, Adelgids, Eriophyid Mites, Gall Mites, Honey Locust Plant Bug, Lace Bug, Leaf Beetle Larvae, Leafminer (non-larvae), Leafrollers, Mealybugs, Psyllids (immature), Red Mites, Sawfly (larvae), Scales (immature), Spider Mites, Webworms, Whiteflies, Blackspot, Powdery Mildew, Young Caterpillars	<p>Winter Dormant Period: Use 5 – 7.5 tbsp. of oil per 1 gal. of water.</p> <p>Summer (Foliar or Cover): Use 2 – 5 tbsp. of oil per 1 gal. of water.</p> <p>For blackspot and powdery mildew control during the summer do not exceed 4 tbsp. of oil per 1 gal. of water.</p> <p>Spray as needed.</p>	
Foliage Ornamentals & Bedding Plants	Aphids, Adelgids	<p>Winter Dormant Period: Use 5 – 7.5 tbsp. of oil per 1 gal. of water.</p> <p>Summer (Foliar or Cover): Use 2 – 5 tbsp. of oil per 1 gal. of water.</p> <p>Spray as needed.</p>	Application safety during bloom period must be determined for each individual species of plant to be treated by conducting a small test.
Non-Fruit-Bearing Trees: Apple, Cherry, Peach, Pear	Mites	Use 2.5 – 5 tbsp. of oil per 1 gal. of water. Apply every 10-14 days.	
	Powdery Mildew	Use 2.5 – 5 tbsp. of oil per 1 gal. of water. Spray before disease first appears. Apply every 10-14 days.	

PLANT	PESTS	TIMING & DILUTION RATE	RESTRICTIONS
Shade Trees** Ornamental Trees** Shrubs (including Conifers, Deciduous and Broadleaf Evergreens & Woody Ornamentals)	Aphids, Adelgids, Eriophyid Mites, Gall Mites, Hemlock Woolly Adelgids, Honey Locust Plant Bug, Lace Bug, Leaf Beetle Larvae, Leafminer (non-larvae), Leafrollers, Mealybugs, Psyllids (immature), Red Mites, Sawfly (larvae), Scales (immature), Spider Mites, Webworms, Whiteflies, Blackspot, Powdery Mildew, Young Caterpillars	Winter Dormant Period: Use 5 – 7.5 tbsp. of oil per 1 gal. of water. Summer (Foliar or Cover): Use 2 – 5 tbsp. of oil per 1 gal. of water. For blackspot and powdery mildew control during the summer, do not exceed 5 tbsp. of oil per 1 gal. of water. Spray as needed.	Restriction: Do not spray when there is obvious moisture deficit in leaves, or the plant is under stress. For fall dormant applications, reduce rate to 5 tbsp. of oil per 1 gal. of water and limit use only to: American Red Oak, Japanese Black Pine, Dogwood, Weeping Cherry, Cornelian Cherry, Crabapple, Norway Maple, Purple Plum. Restriction: This product may cause discoloration of Blue Spruce. Do not use on conifers or ferns not tolerant to oil sprays (e.g. Alberta Dwarf Spruce). Use enough spray solution to completely penetrate the leaf canopy and cover both top and bottom of all the leaves and stems until wet but without significant runoff.

Use the lowest concentration indicated in the above table if sensitive plants are to be treated.

**This product removes the glaucous (blue) bloom from such evergreens as Colorado Blue Spruce and Koster Spruce.

Always use most dilute concentration indicated in the preceding table for the type of plant to be treated or test spray oil sensitive plants such as Cryptomeria, Smoke Tree, Chamaecyparis, Juniper, Japanese Holly and Spruce.

Tendency toward sensitivity: Red Cedar and Douglas Fir.

HOBBY GREENHOUSES

Frequency of Application: Use once a week initially, then as the pest is controlled, decrease the frequency to every 2-3 weeks as needed. Application safety during bloom period must be determined for each individual species of plant to be treated by conducting a small test.

PLANT	PESTS	TIMING & DILUTION RATE	RESTRICTIONS
Ageratum, Crown of Thorns, Dieffenbachia, Dogwood*, Dracaena*, Ferns, Ficus, Holly*, Lisianthus, Magnolia*, Orchid, Palms, Petunia, Poinsettia, Schefflera, Sunflower	Aphids, Fungus Gnats, Leafminers, Mealybugs, Scales (soft & hard), Spider Mites, Thrips, Whitefly, Powdery Mildew*	Summer (Foliar or Cover): Use 1.5 – 2.5 tbsp. of oil per 1 gal. of water. Spray as needed.	Due to varietal differences in response to a treatment of this product at the labeled rate, conduct a small test on 1 or 2 plants of the specific variety to be treated. Some plants are more sensitive to oil treatments if any of the following conditions are present
Aglaonema, Aster, Azaleas, Begonias, Browallia, Camellias, Carnation, Celosia, Chrysanthemum, Coleus, Cosmos, Crepe Myrtle*, Dusty Miller, Easter Lilies, Fuchsia*, Gardenias, Gerbera, Hellichrysum, Hibiscus Foliage, Hydrangea,	Aphids, Fungus Gnats, Leafminers, Mealybugs, Scales (soft & hard), Spider Mites, Thrips, Whitefly, Powdery Mildew*	Summer (Foliar or Cover): Use 2.5 – 5 tbsp. of oil per 1 gal. of water. Spray as needed.	when application is made: high humidity (74%), an overcast or cloudy day, inadequate air flow, a small greenhouse where the sunlight is magnified causing a fast build-up of temperature and light intensity.

PLANT	PESTS	TIMING & DILUTION RATE	RESTRICTIONS
Impatiens*, Jade Plant, Marigold, New Guinea Impatiens, Nicotonia, Philodendron, Portulaca, Reiger Begonias, Snapdragon, Zinnias			*Asterisk denotes crop, pest not approved in California.
Leaf Polish for Hardy Plants		Use 2.5 tbsp. of oil per 1 gal. of water.	

HOUSEPLANTS

PLANT	PESTS	DILUTION RATE per 1 Gallon Water	RESTRICTIONS
Chrysanthemum, Dieffenbachia, Dracaena, Ferns, Gardenias, Jade Plant, Palms, Philodendron, Schefflera	Aphids, Leafminers, Mealybugs, Scales, Spider Mites, Whitefly*	2.5 – 5.0 Tbs. (1¼-2½ fl. oz.)	<p>Protect floor, floor coverings and furnishings from overspray.</p> <p>Do not exceed 3 consecutive applications without allowing a two week application interval.</p> <p>Do not apply to plants in direct sunlight behind glass.</p> <p>Do not use on Coconut Palms or Maidenhair Ferns.</p> <p>Chrysanthemum blooms have shown phytotoxic symptoms at 5.0 Tbs. per gallon of water.</p> <p><i>*All Seasons® Horticultural and Dormant Spray Oil is most effective on Whitefly during immature stages.</i></p>

FOR HOUSEPLANTS AND HOBBY GREENHOUSES

- Do not exceed the maximum rates or apply more often than indicated on this label.
- Certain plant species may be sensitive to oil. A small number of plants should be test sprayed prior to general spraying.
- Use caution on open blooms – bleaching and spotting have been observed on the open bloom of certain plants.

STORAGE AND DISPOSAL

Do not contaminate water, food or feed by storage or disposal.

Pesticide Storage: Store and transport in an upright position. Keep container tightly closed to prevent evaporation. Do not use, pour, spill or store near heat or open flame. Store in a cool, dry area inaccessible to children or pets. **Pesticide**

Disposal: *If partly filled* - Call your local solid waste agency for disposal instructions. Never place unused product down any indoor or outdoor drain.

Container Disposal: *If empty* - Nonrefillable container. Do not reuse or refill this container. Place in trash or offer for recycling if available.

FIRST AID

Have the product container or label with you when calling a poison control center or doctor, or going for treatment. You may also contact SafetyCall® International for emergency medical treatment at 1-833-972-1101.

- | | |
|------------------------|---|
| If in
Eyes: | <ul style="list-style-type: none">• Hold eye open and rinse slowly and gently with water for 15-20 minutes.• Remove contact lenses, if present, after the first 5 minutes, then continue rinsing eye.• Call a poison control center or doctor for treatment advice. |
|------------------------|---|

Note to Physician: This product contains petroleum distillates and may pose an aspiration pneumonia problem.

**PRECAUTIONARY STATEMENTS
HAZARDS TO HUMANS AND DOMESTIC ANIMALS**

CAUTION: Causes moderate eye irritation. Avoid contact with eyes or clothing. Wash thoroughly with soap and water after handling and before eating, drinking, chewing gum or using tobacco. Wear long-sleeved shirt, long pants, shoes, socks and waterproof gloves when using or handling this product.

ENVIRONMENTAL HAZARDS

This product is toxic to fish. To protect the environment, do not allow pesticide to enter or run off into storm drains, drainage ditches, gutters or surface waters. Applying this product in calm weather when rain is not predicted for the next 24 hours will help to ensure that wind or rain does not blow or wash pesticide off the treatment area. Rinsing application equipment over the treated area will help avoid run off to water bodies or drainage systems. Apply this product only as specified on the label.

For information on pesticide products (including health concerns, medical emergencies, or pesticide incidents), contact SafetyCall® International at 1-833-972-1101.

WARRANTY

Seller warrants that this product complies with the specifications expressed in this label. To the extent consistent with applicable law, Seller makes no other warranties, and disclaims all other warranties, express or implied, including but not limited to warranties of merchantability and fitness for the intended purpose. To the extent consistent with applicable law, Seller's liability or default, breach or failure under this label shall be limited to the amount of the purchase price. To the extent consistent with applicable law, Seller shall have no liability for consequential damages.

TRUSTED SINCE 1926

BONIDE[®]

ACTIVE INGREDIENT:

Mineral oil*.....98%

OTHER INGREDIENTS:.....2%

TOTAL.....100%

*Contains petroleum distillates

**KEEP OUT OF REACH OF CHILDREN
CAUTION**

See other panels for additional precautionary statements and first

FIRST AID

Have the product container or label with you when calling a poison control center or doctor, or going for treatment. You may also contact SafetyCall® International for emergency medical treatment at 1-833-972-1101.

If in Eyes: Hold eye open and rinse slowly and gently with water for 15-20 minutes. Remove contact lenses, if present, after the first 5 minutes, then continue rinsing eye. Call a poison control center or doctor for treatment advice.

Note to Physician: This product contains petroleum distillates and may pose an aspiration pneumonia problem.

PRECAUTIONARY STATEMENTS

HAZARDS TO HUMANS AND DOMESTIC ANIMALS

CAUTION: Causes moderate eye irritation. Avoid contact with eyes or clothing. Wash thoroughly with soap and water after handling and before eating, drinking, chewing gum or using tobacco. Wear long-sleeved shirt, long pants, shoes, socks and waterproof gloves when using or handling this product.

STORAGE AND DISPOSAL

Do not contaminate water, food or feed by storage or disposal.

Pesticide Storage: Store and transport in an upright position. Keep container tightly closed to prevent evaporation. Do not use, pour, spill or store near heat or open flame. Store in a cool dry area inaccessible to children or pets.

Pesticide Disposal: *If partly filled* – Call your local solid waste agency for disposal instructions. Never place unused product down any indoor or outdoor drain.

Container Disposal: *If empty* – Nonrefillable container. Do not reuse or refill this container. Place in trash or offer for recycling if available.

©Bonide Products, LLC
6301 Sutliff Road, Oriskany, NY 13424

EPA Reg. No. 4-80
EPA Est. No. 4-NY-1

Lift & Peel Here